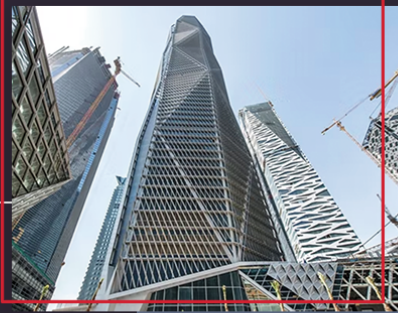


ICS ARABIA PROJECTS

SAUDI ARABIA



ICS Arabia

We are an Innovation and Client-driven Organization with a Mission to Accelerate the Development of Smart Cities and Digital Infrastructure in the Kingdom of Saudi Arabia and the Region.

20

Years of Experience

120+

Projects Completed

70+

Unique Clients Served

75+

SEC Approved Engineering Staff

2 bn+

Reachback to Skilled Workforce and Operators

Featured KSA Clients



Presidency of State Security



مدينة الملك فهد الطبية
King Fahad Medical City



المركز الوطني لأمن المسافرين
National Travellers Security Center



31 ICT and ELV Systems for Smart Healthcare City SFMC, Riyadh and Jeddah



Key Facts:

(For Each City/2 Locations)

2,500,000 sq. m.

Total Allocated Plot Size

491,000 sq. m.

Largest Single Structure Hospital Building

1,700

Residences

Project Details:

- ◆ **Location:** Riyadh and Jeddah
- ◆ **Client:** Ministry of Interior
- ◆ **Status:** On-going

In 2017, ICS Arabia was appointed for design-build delivery of cutting-edge ICT and ELV technology systems for the largest Medical Cities in the region, with two separate locations in Riyadh and Jeddah.

Our scope of work includes complete design, engineering, procurement, installation and integration of 31 unique ICT systems, including Structured Cabling, Data Networking, Nurse Call, IPTV, CCTV, Access Control, Parking Management, Distributed Antenna System, TETRA Mobile Radio, Lighting Control Systems, Infant Protection System, Real Time Location System, WIFI, Central Battery System, BMS, SCADA, I2BS and multiple Medical Technologies.

ICT/ELV systems design followed BICSI, TIA, NFPA, RCD, FGI, UL, and numerous international standards and guidelines. Design Engineering and Implementation was carried out in anticipation of the latest medical technological trends and has relied heavily on both IT convergence and Internet of Things (IOT) to best deliver an advanced facility at the time of launch.



Scope of Work:

(For Each City/2 Locations)

Communication Technology

10,000,000 Im

Copper Cabling

500,000 Im

ISP and OSP Fiber Cable

350,000

Data Points

1,400

Communication Racks

20,600

Security Devices

16,000

Mass Notification Devices

22,500

Voice Communication Devices

Medical Technology

29,000

RTLS and IPS Devices

5,400

Nurse Call Devices with Over 2,600 Patient Beds

4,200

Master Clocks

3,000

Healthcare PDA

190 ZONES

Sound Masking System

ICT INFRASTRUCTURE Built to the Latest BICSI and TIA Standards

SFMC Smart City complex is built on 3,000,000 sq. m. fenced territory. It is comprised of the single structure Hospital building (450 000 sq. m.) and over 1700 residences, along with supporting utility buildings to reach a total Built-up area of 1,200,000 sq. m.

PASSIVE INFRASTRUCTURE AND CABLING

ICS Arabia is contracted for engineering, installation and commissioning of both indoor (ISP) and outdoor (OSP) passive infrastructure for all facets of structured cabling and its containment. All works at SFMC are executed with the highest international standards to provide a secure communication with the best throughput cable performance.

WIRELESS COMMUNICATIONS

Our engineers provided optimized solution for WIFI 6 implementation with accurate heat mapping of the facility design and optimized allocation of WAPs. Further the WIFI system is highly centralized with WIFI Controllers managing all segments of the over 6000 WAPs placed throughout the campus buildings. The WIFI implementation not only provides reliable high speed communications but also meets the highest cybersecurity code.

SMART HOSPITAL TECHNOLOGY

SFMC is designed on the latest medical planning and technology. ICS Arabia provides the HMIS and EMR platforms on which all services of the hospital are converged. Further ICS Arabia was responsible for all the technology implementation and complete data communication architecture which allows super-fast movement of large Patient data files from the Imaging Machines to their storage in the Data Center and back to the Consulting rooms/Operation theaters within the Hospital. We also provided network engineering and implementation enabling Internet of Medical Things (IoMT) including medical assets management and monitoring throughout the Hospital.



INTEGRATED ELV SECURITY

ICS Arabia provided comprehensive Integrated Extra Low Voltage (ELV) Systems solutions utilizing the latest technology and equipment. All works complied with the strictest healthcare facility local and international codes, and the required safety and security standards.

SURVEILLANCE AND ACCESS CONTROL SYSTEMS

ICS Arabia is responsible for design, engineering, procurement, installation, integration and commission of all CCTV & Surveillance Systems, Access Control and ID Management Systems, Parking Guidance & Management Systems, Perimeter Fence & Protection, X-Ray & Baggage Scanners, Road Blockers, Gates, Tire Killers etc

FIRE DETECTION AND ALARM SYSTEMS

ICS Arabia was tasked to design-build numerous Fire & Life Safety (FLS) systems for both SFMC locations. Our NFPA certified engineers conducted comprehensive analysis for hospital requirement and provided engineering solutions according to AHJ KSA Civil Defense requirements for automated fire detection and alarm points.

AV AND ACOUSTICS SYSTEMS

HIGH-TECH CONFERENCE ROOMS

ICS Arabia was responsible for AV and Acoustics Systems design-implementation for conferencing, meeting rooms and common areas. Over 6,500 IPTV display screen are installed per location. Numerous Auditoriums, Conference Rooms, Meeting rooms and Telemedicine Labs were amongst the various different types of AVC implementations carried out in the project.

Scope of Work:

(For Each City/2 Locations)

ELV Systems

7,800

CCTV Cameras

3,200

Access Control Portal

16,000

PA - MNS devices

8,100

Managed Parking Spots

90,000

Fire Detection and Alarm Points

AV Systems

6,500

IPTV Display Screens

250

Audio Video Conferencing Rooms



Smart Security Forces Medical City ICT and ELV Technology (ICS Arabia Scope)



SFMC: TIER III+ DATA CENTER AND OPERATIONS CENTER, RIYADH AND JEDDAH



Key Facts:
(per Location)

8,937 sq. m.

Buildout Area

500

Communication Rack

102 km

Fiber Cable

1,900

Network Switches

99.982%

Minimum Data Center Availability

Project Details:

- ◆ **Location:** Riyadh and Jeddah
- ◆ **Client:** Ministry of Interior
- ◆ **Status:** On-going

Security Forces Medical City (SFMC) is the largest in the region smart medical city with two locations in Riyadh and Jeddah.

ICS Arabia is currently in the process of completing two design-build state-of-the-art Data Centers, Operations Center and office facilities for 400+ resident engineers and VIP staff. Our scope of work includes all facets of Engineering –Civil/Structural, MEPF, Fit-out including, Construction, Commissioning and Uptime Institute Certification for Design (TCCF) and Construction (TCCF) are part of ICS Arabia scope including program management.

The Riyadh Facility is being commissioned and handed off to the client in 2022, and Jeddah by 2023. Design for the Data Center has already been certified TCCF for the Riyadh Facility – Uptime site, we are currently working with Uptime to certify the Jeddah Data Center design as well. Both facilities will undergo Uptime Institute Certification for Constructed Facility (TCCF).





TIER III+ DATA CENTER

The strictest quality, security, efficiency, redundancy and connectivity requirements-based Tier III+ Data Center

SFMC data center houses approx. 28,000 blade servers on 500 racks per location. It is compliant with Uptime Institute Tier III rating and ensures minimum availability of 99.982% uptime, and downtime per year is expected not more than 1.6 hours. Prime-Power Generators to serve the required IT load and supporting facilities in N+N fault tolerant and underground fuel storage providing at least 72-hour of continuous operation at full load. The Data Center is LEED certified

SECURITY

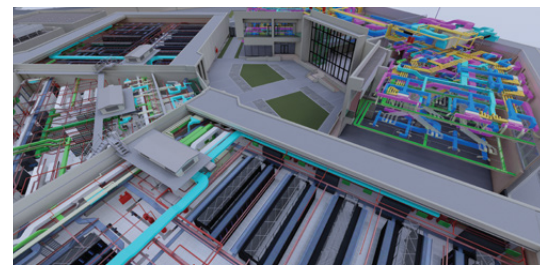
- ◆ 24/7 monitoring and video surveillance
- ◆ Multiple physical security layers, white spaces' mantraps, IDS
- ◆ Early fire detection (VESDA) using nebulized water or gas-based fire suppression systems
- ◆ Climate and relative humidity control using precision equipment.
- ◆ IT rooms' isolation with a cold aisle/hot aisle configuration
- ◆ BMS monitoring, Water leak detection, Lightning Protection system, Automated fire extinguishing system

REDUNDANCY

- ◆ UPS and continuous-power generator to serve the required IT load in N+N configuration
- ◆ 2.5MW IT load and 2.5MW IT cooling capacity with redundant chilled water network loops, 2 independent MV supplies.

EFFICIENCY

- ◆ Constant improvement of their energy efficiency and Power Usage Effectiveness (PUE)
- ◆ IT rooms' isolation with a cold aisle/hot aisle configuration





24/7 OPERATIONS CENTER

ICS Arabia is also delivering advanced Operations center with the latest AV and IT Solutions, and custom- designed furniture. SFMC Operations Center will serve as the main line for Hospital driving a more collaborative hospital environment to enhance the entire patient journey, improve operations efficiency and reduce cost.

Key Functions will include: Patient Flow Management, Video Content Analytics, Staff and Asset Monitoring. The SMFC Operations Center will also feature specialized cyber tools integrated with purpose-built AV and fit-out infrastructure.

CONNECTIVITY

- ◆ Carrier-neutral facilities served by a large number of fiber operators and IP carriers
- ◆ Multi-100 G core network
- ◆ Redundant interconnection between data centers (Layer 2/Layer 3)



SUMMARY

The complex consist of Tier III+ Data Center, cutting-edge Operations Facility, Utility and Support buildings with total buildout area of 8937 sq. m. per location. Facilities are designed to the highest security requirements, compliance to all KSA and relevant International Building Codes, and feature state-of-the-art technology.

Scope of Work (Riyadh and Jeddah):

- ◆ **Design and Engineering:** BIM Architectural Design, Civil/Structural Engineering, MEPF Engineering, Data Center Fire Safety Systems, Uptime Tier Certification, LEED Certification, Commissioning
- ◆ **Construction:** Project Management, Procurement, Fit-out
- ◆ **Integration of 31 ICT packages** in the Data Center such as AV, Telephony, IPTV, Fire Alarms, Data Network, Enterprise Security and other Healthcare related packages
- ◆ **Building Automation:** BMS, SCADA, Energy Management System , Lighting Control
- ◆ **IT Infrastructure:** Network Engineering and Installation, Data Storage, Compute Systems, Cloud Infrastructure, Cybersecurity

UNIFIED INTEGRATED PROGRAM (UIP) TIER III+ DATA CENTER AND 24/7 OPERATIONS CENTER



Key Facts

7,412 sq. m.
Buildout Area

463
Communication Racks

102 km
Fiber Cable

1000+
Security Cameras

99.982%
Minimum Data Center Availability

Project Details:

- ◆ **Location:** Riyadh
- ◆ **Client:** Ministry of Interior
- ◆ **Status:** Delivered

ICS Arabia was contracted to Design and Build state-of-the-art Data Center and Operations Center with offices for 100+ resident engineers and Executive Leadership. Our scope of work included Civil/Structural Engineering, MEPF, ICT and ELV systems, Custom Fit-out and IT Engineering. Data Center IT Infrastructure was designed for scalable operations and has high capacity to support high-density and compute-intensive requirements. The facilities were handed over to our esteemed client in January 2019. The Data Center was accredited Uptime Institute Certification for Design (TCCF) and Construction (TCCF) for Tier III+. We are currently performing as a Day-2 support services provider for the 6MW Data Center and for the office facility with ICS Arabia's resident and 24/7 available engineers and technicians using ITIL and ISO standards.





TIER III+ DATA CENTER

Built to Meet the Most Rigorous Requirements for Security, Availability, Speed and Cloud Access

UIP data center houses 463 racks. Data Center is accredited with Uptime Institute Tier III rating for Design, Facility and Sustainable Operations, and ensures availability of 99.982% uptime, and downtime per year is expected not more than 1.6 hours. Prime-Power Generators to serve the required IT load and supporting facilities in N+N fault tolerant providing at least 72-hour of continuous operation at full load.

SECURITY

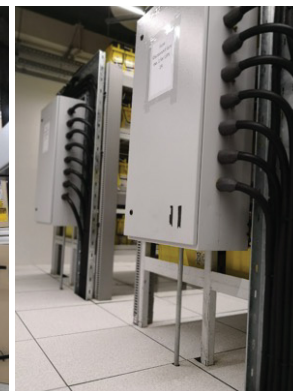
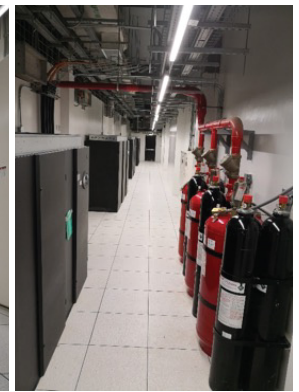
- ◆ 24/7 monitoring and on site 24/7 security staff and video surveillance
- ◆ Cutting-edge technological and physical security measures, including IP-DVR cameras, perimeter fencing, biometric scanners and card
- ◆ Early fire detection systems, BMS monitoring, water leak detection, Lighting Protection system, Automated fire extinguishing system

EFFICIENCY

- ◆ Constant improvement of their energy efficiency and Power Usage Effectiveness (PUE)
- ◆ IT rooms' isolation with a cold aisle/hot aisle configuration
- ◆ Free cooling systems for higher energy efficiency

REDUNDANCY

- ◆ UPS and back-up generator to serve the required IT load in N+N configuration
- ◆ 2.5MW IT power load and 2.5MW IT cooling capacity with redundant chilled water network loop, 2 independent MV supplies.





24/7 OPERATIONS CENTER

UIP Operations Center is equipped with cutting-edge ICT technology and features the highest level physical and cybersecurity. The center offers powerful, cloud-based infrastructure for real-time operations, integrating and interconnecting information and processes.

Facility is furnished with large-screen displays, digital conferencing, sound reinforcement, video and audio switching, and central control systems. Iconic architecture and interior design reflects modern interpretation of Kingdoms heritage, combined with the state-of-the-art lighting design and custom designed furniture.

CLOUD CONNECTIVITY

Build on efficient, high-performance hybrid cloud architecture with native access to AWS Direct Connect, Microsoft Azure Express Route, Alibaba Cloud, IBM Cloud Direct Link and Oracle FastConnect.





Summary

The UIP complex consists of Tier III+ Data Center, 24/7 Operations Center, Visitors Building, Utility and Support Building with total buildout area of 7,412 sq. m. The Data Center is accredited for Uptime Tier III+ Design and Construction, and all facilities are built following TIA and Bicsi best-practices, and are in compliance with the NFPA, Civil Defense and other relevant codes.



Scope of Work:

- ◆ **Design and Engineering:** BIM Architectural Design, Civil/Structural Engineering, MEP Engineering, Fire Life Safety (FLS) Systems, Fire Safety Command Centre, Uptime Tier Certification, LEED Certification, Commissioning
- ◆ **Construction:** Project Management, Procurement, Fit-out
- ◆ **ICT and ELV:** Data Center such as AV, Telephony, IPTV, Fire Alarms, Data Network, Enterprise Security, CCTV Security Monitoring Building Automation: BMS, SCADA, Energy Management System, Automated Lighting Control
- ◆ **IT Infrastructure:** Network Engineering and Installation, Data Storage, Compute Systems, Cloud Infrastructure, UPS, VDI, Cloud Computing, Cybersecurity
- ◆ **Operations & Maintenance:** Day 2 Support: 24/7 Operations and Maintenance (Facility & IT Management)

National Information Center: Security Operations Center (SOC)



Scope of Work:

Security Operations Center (SOC):

- ◆ Design-Build, including MEP Engineering and FLS Systems
- ◆ Structured Cabling
- ◆ Energy Management/Smart Metering
- ◆ Angled Video Wall Display
- ◆ Interactive Touch Screen Displays
- ◆ IT Engineering and Integration
- ◆ Cybersecurity

Status: Delivered

Enterprise Operations Center and VIP Command and Control Center:

- ◆ Conceptual to IFC Design, including AV Detailed Design
- ◆ IT Integration Detailed Design

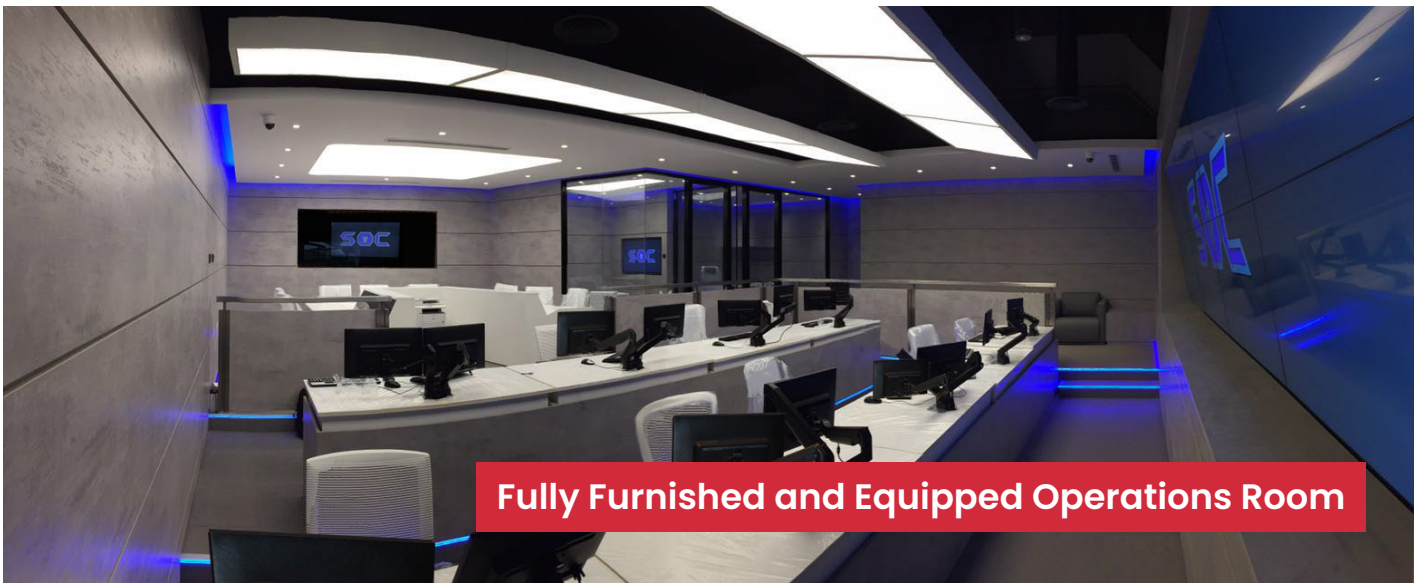
ICS Arabia was contracted for turnkey design-build delivery of a new NIC Security Operations Center (SOC) in 2016. National Information Center (NIC) Security Operations Center (SOC) is the main line of defense for all cyber threats to the Kingdom's most sensitive data hosting and network infrastructure within the NIC. The SOC is where 24/7, continuous monitoring of threats detection and their real-time response is undertaken.

SOC features the latest AV and IT solutions and custom-built fit-out. The facility is optimized for 24/7 operations and as a mission critical domain, it has its independent Data Center for Cyber and SOC monitoring. Specialized cyber tools and advanced highest security IT infrastructure were designed and implemented to support intelligence operations.

Our work also included strategy and detailed design for NIC's Enterprise Operations Center, and VIP Command and Control Centers.



SOC Operation Room Conceptual Design



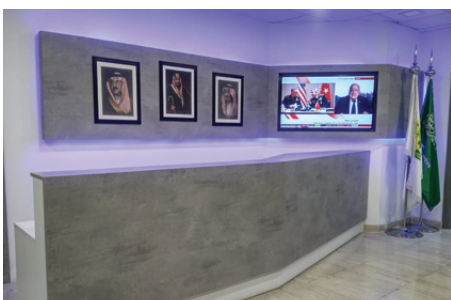
Fully Furnished and Equipped Operations Room

SECURITY OPERATIONS CENTER (SOC) From Strategy to Turnkey Delivery

ICS Arabia was involved in NIC's SOC planning from strategy development and construction, to procurement, system integration, and commissioning. We provided our client in-depth system analysis for design, leading to the most advance and secure IT infrastructure development, scalable for future expansion and built on reliable cloud infrastructure. The facility design features optimized workspace planning, state-of-the-art lighting and custom-build furnishing

Future Proof Design for 24/7 Cybersecurity Operations

ICS Arabia also provided consulting and conceptual design services for two other facilities for NIC. Scope of work included strategy, requirement analysis, conceptual design, and IT architecture design.



NTC: HQ Command Center Building and Operations Center



Scope of Work:

Operations Center:

- ◆ MEP Engineering
- ◆ AV and ICT Systems
- ◆ FLS Systems Engineering
- ◆ Cybersecurity & IT Integration
- ◆ Construction of Greenfield Facility
- ◆ Data Center Design-Build

HC Building:

- ◆ Architecture and Building Engineering
- ◆ Complete Construction and Commissioning
- ◆ 24/7 Call Center with IT Integration and Furnishing
- ◆ Data Center Design-Build

ICS Arabia was contracted for 2 projects for The National Traveler Center (NTC). In 2017, we delivered turnkey solution for the state-of-the-art Command Center and provided design services for NTC Headquarters Command Center building in 2018.

The National Traveler Center was established in order to provide 24/7/365 verification of visa authenticity and validation for thousands of travelers daily arriving to and departing from the Kingdom of Saudi Arabia. This, one window operation, is the focal point for all incoming calls from across the globe and provides instantaneous guidance and support to multinational ticketing staff stationed at all international airports worldwide.

ICS Arabia played a critical role supporting NTC with strategic and operational value-added engineering solutions, project management and commissioning for client's construction projects.



Intelligence Operations Center

NTC Operations Center is a 24/7 highest security information gathering and coordination center with Call Center. It has 12 video walls and custom-built call center furnishing. ICS Arabia delivered turnkey solution from design to IT systems integration and configuration.



NTC HQ Building

ICS Arabia was contracted for greenfield design of a new NTC Headquarter building. Facility was 5 floors with four distinct divisions for separate business operations. In addition to offices, the building hosts a 24/7 Call Center, a two-level Command Center and a Tier III Data Center. The facility also housed cafeterias and gyms to offer a unique futuristic environment for government staff aspiring.

The designs were done using state-of-the-art BIM software to provide a comprehensive and composite view of the facilities.

PIF Tower: Advanced ICT Infrastructure and Building Engineering Solutions



Scope of Work:

- ◆ MEP Engineering and Installations
- ◆ Structured Infrastructure Cabling
- ◆ LV and LC Cabling
- ◆ Containment, Conduits and Cable-runs

Project Details:

- ◆ **Location:** Riyadh
- ◆ **Client:** PIF
- ◆ **Status:** Delivered

The PIF Tower (previously know CMA Tower) is the jaw dropping, 80-storey tall, high-performance tower located in the heart of the KAFD. The tower is currently the tallest building in the Kingdom, and it hosts PIF and other prestigious offices.

The project provides approximately 185,000 m2 of gross floor area above ground level, comprising corporate and commercial office space, a state-of-the art 450 seat auditorium, dining areas, and a fitness center and pool at 54 level. The building is designed for energy efficiency, features intelligent infrastructure and is expected to achieve LEED Gold certification.

ICS Arabia was contracted for extensive MEP and ELV Engineering and Installation works for the top 10 floors. We were responsible for structured infrastructure cabling, LV and LC Cabling, and containment, conduits and cable-runs installations.

AV Telepresence Solution and Turnkey VTC Studios Delivery for Madinah Governorate



Scope of Work:

- ◆ CISCO Telepresence Implementation
- ◆ Facility Design and Construction, including MEP and AV Systems
- ◆ IT Infrastructure
- ◆ Room Management Configuration
- ◆ Custom-built Fit-out and Furnishing
- ◆ Lighting Engineering
- ◆ Cybersecurity

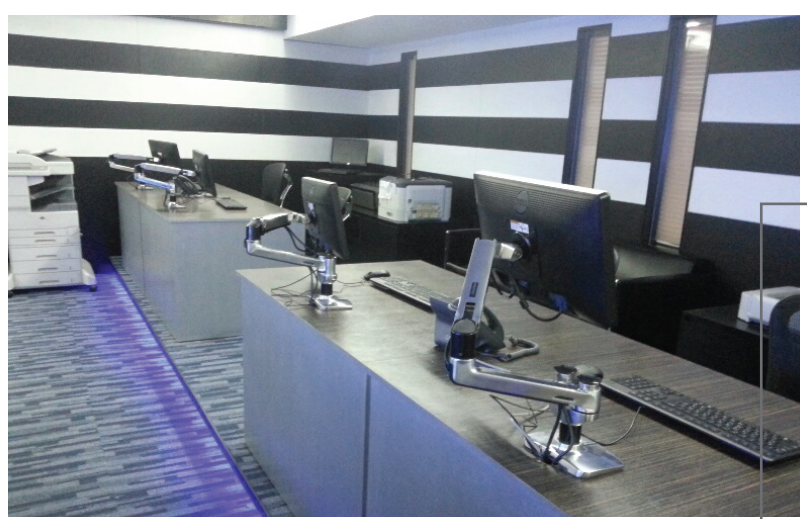
Project Details:

- ◆ **Location:** Madinah
- ◆ **Client:** Emarat Madinah
- ◆ **Status:** Delivered

ICS Arabia was contracted for design-build the state-of-the-art main VTC Studio and custom developed eMajlis solution for his Excellency Governor of Madinah state. The requirement included the design and commissioning of multiple remote VTC conferencing studios within each regional city of the Madinah State.

We were assigned to provide customized solution for eMajlis Telepresence that included IT and ICT infrastructure design and installation, and eMajlis solution development. AV Telepresence solution allows transmitting live videos, audio feed, and document camera feed from remote towns to the Governors Palace eMajlis allowing citizens to voice their requests in an efficient and respectable manner.. The highest protocol Cybersecurity systems were implemented.

Prince Naif Academy: Intelligence Information Collaboration Center Facility



Scope of Work:

- ◆ Architectural Design
- ◆ Design-Build Data Center
- ◆ MEP Engineering & Build
- ◆ Video Walls Implementation
- ◆ Live Twitter Feed - Information Ticker
- ◆ Custom Fit-out and Specialized Furniture
- ◆ Raised Floor and Noise Absorption Wall Cladding

Project Details

- ◆ **Location:** Riyadh
- ◆ **Client:** Mol - GID
- ◆ **Status:** Delivered

ICS Arabia provided full-scope design-engineering-build services to the Ministry of Interior, Prince Naif Academy (PNA) for their Intelligence Information Collaboration Center Facility.

The project also included ICT & IT Infrastructure, Cloud Solutions and Cybersecurity implementation along with DevOps for client required applications.

The scope included a separate Data Center which was built to host the services for this Command Center.

Saudi Police: 999 Emergency Response Command Centers



Scope of Work:

- ◆ Architectural Design and Build
- ◆ Data Centers and Command Centers
- ◆ MEP Engineering and FLS Systems
- ◆ Structured Cabling
- ◆ Video Walls Implementation
- ◆ IT Engineering
- ◆ Monitoring Center Fit-out and Specialized Furniture
- ◆ Energy Management
- ◆ CCTV and Call Center Implementation
- ◆ Public Safety TETRA Communications

Project Details

- ◆ **Location:** Dammam and Al Ahsa
- ◆ **Client:** Saudi Police
- ◆ **Status:** Delivered

ICS Arabia was contracted to design and built multiple Command Centers for Saudi Police Emergency Response 999 Helpline in the Eastern Province. The Saudi Police Emergency Service Facilities feature leading-edge AV technology solutions and custom-tailored design fit-out.

The Dammam facility was a two-storey Call and Command Center on the ground floor and staff offices on the first floor. ICS undertook the entire facility design, build and fit-out of a 420 sq. m. area including a new 70 sq. m. Data center.

Another such facility was design and built in Al-Ahsa city and included a similar Call and Command Center along with staff offices.

TETRA: Telecom Center and Lab



ICS Arabia was contracted to design-build multiple Public Safety TETRA Communication labs. These labs are hosted in existing MOI facilities and feature the highest IT and physical specialized security requirements.

Our work started with requirements and space utilization studies, followed with MEP and Fire Safety Engineering. High electrical capability was required to support IT requirements. Local Data Centers with Telecoms DC Voltage infrastructure are hosted in the facilities.

Cybersecurity and Public Safety communications networks were implemented in these facilities. Encryption Building for Public Safety Authority. Our work included IT optimization as per client requirement

Scope of Work:

- ◆ Space Utilization Studies
- ◆ Public Safety TETRA Communications
- ◆ MEP Engineering, Installation and Commissioning
- ◆ Data Center with Telecoms DC Voltage Infrastructure
- ◆ IT Infrastructure
- ◆ Lab Fit-out and Specialized Furniture

Project Details:

- ◆ **Location:** Riyadh
- ◆ **Client:** GID - MoI
- ◆ **Status:** Delivered

MEPF Works



Location: Riyadh
Client: Saudi Bin Laden Group
Status: Delivered

2008

Princess Nourah Bint Abdulrahman University

Princess Nourah Bint Abdulrahman University (PNU) is a public women's university in Riyadh, Saudi Arabia, and the largest women's university in the world. The University, that was founded in 1970, offers students integrated educational programs. PNU encompasses 34 colleges in the city of Riyadh and the neighboring cities, an Arabic Language Institute (for non-speakers of Arabic), a Deanship of Community Service and Continuous Education, and a Community College and offers postgraduate programs.

ICS Arabia provided integrated building engineering services, a full scope of MEP works and implemented exceptional light design solutions.

2016

Riyadh Public Transport Control Centre

Riyadh Public Transport Control Centre is located in the King Khalid International Airport area in Riyadh, KSA and was designed for the government officials working at the Riyadh Public Transport Department.

The building is representing the vision of the Arriyadh Development Authority (ADA), for erecting structures that leverage advanced technologies and material, are efficient in use of natural resources such as light, energy and water, and are economically and proficiently maintained.

ICS Arabia provided Integrated Mechanical, Electrical and Plumbing services. We implemented state-of-the-art engineering solutions to create energy efficient building infrastructure that minimizes use of natural resources, maximize use of space, yet maintain a high level of comfort among the occupants.



Location: Riyadh
Client: Saudi Lebanese Tarouk
Status: Delivered



Location: Jeddah
Client: Al Muhaidib Contracting Company
Status: Delivered

2016

King Abdullah Sport City – Admin Building

The King Abdullah Sports City is a state-of-art multipurpose and modern stadium at the outskirts of Jeddah, Saudi Arabia. The main stadium, which accommodates over 63,000 spectators is the biggest stadium in Jeddah, and the second biggest in Saudi Arabia. The elegant and versatile Stadium combines Islamic architecture with modern creative designs. This highly functional stadium enabled the country to host international events.

ICS Arabia provided variety of Mechanical-Electrical and Plumbing works for Abdullah Sports Cities Administration Building, assuring interoperability of systems for optimal efficiency in management and maintenance of the facility. Our solutions included modern energy management controls system to ensure that equipment operates at optimum efficiency.



2014

King Abdulaziz City of Science And Technology

King Abdulaziz City for Science and Technology (KACST), formerly known as the Saudi Arabian National Centre for Science and Technology (SANCST), was established in 1977. It is an autonomous government association in charge of the promotion of science and technology, and the coordination of scientific efforts among the various institutions within the Kingdom. KACST's new facility featured world's icon architecture, sustainable building solutions and is designed for research operations supporting the development in the agricultural, industrial, medical and environmental fields.

ICS Arabia provided a wide spectrum of MEP services and implemented engineering solutions that are maximized for the interoperability of systems for optimal efficiency.

Location: Riyadh
Client: Saudi Bin Laden Group
Status: Delivered

2011

Al Mashaer Al Mugaddassah Metro Line

The Al Mashaer Al Mugaddassah Makkah Metro Line provides safe, fast and efficient transport services to over 3 million pilgrims to perform Hajj yearly between the Holy places in Makkah (Al Mashaer Al Mashaer Al Mugaddassah). The 18.1km line metro eases the congestion of buses and provide a safer, more comfortable and healthier environment for pilgrims.

ICS Arabia provided integrated Mechanical-Engineering solutions and upgraded railway infrastructure. Our engineering solutions increased railway efficiency, reduced maintenance costs and contributed to creation of one the most advanced railways in the region.



Location: Makkah
Client: Saudi Railways Organization
Status: Delivered



2012

CAD Pharmaceutical Plant

CAD Middle East Pharmaceutical Industries is a state-of-art manufacturing facility using the latest technologies and manufacturing the highest quality of active pharmaceutical ingredients.

ICS Arabia provided a full scope of Electro-Mechanical works, intelligent system design and automation solutions that led to energy efficiency, cost savings and interruptible operations.

Location: Riyadh
Client: CAD Middle East Pharmaceutical Industries
Status: Delivered

MEPF Works



Location: Jeddah
Client: Mobily
Status: Delivered

2013

Mobily Technical Building

Mobily Saudi Company is a pioneer in Telecom and Information Technology in the Kingdom of Saudi Arabia. It was launched in 2004 and offers fixed line, mobile telephony and internet services. Mobily established one of the largest wireless network coverage in the Kingdom and one of the widest Fiber To The Home (FTTH) networks, in addition to one of the biggest data centers systems in the region.

ICS Arabia provided state-of-the-art building engineering solutions to Mobily Technical Building. We created sustainable solutions for building ventilation and plumbing, implemented automated electric control solutions, built battery room and advised client on energy management.

2016

MCIT Data Center

The Ministry of Communications and Information Technology (MCIT) in Saudi Arabia is developing a data centre for Artificial Intelligence (AI) and advanced analytics. The Insights Centre will focus on building capabilities and digital solutions in AI and advanced data analytics for the delivery of digital transformation solutions and services in the Kingdom.

ICS Arabia provided integrated building engineering services and a full scope of MEP works.



Location: Riyadh
Client: Ministry of Communication
And Tele-Communication
Status: Delivered



Location: Riyadh
Client: Saudi Lebanese Tarouk Contracting Co. Ltd
Status: Delivered

2012

Zaher Palace

The Al-Zaher Palace Museum in Makkah, Saudi Arabia, is a historical gallery that exhibits the history of Makkah. The museum, which was built in 1944, spans over 2,700 sq. meter and has various archaeological assemblages that depict different eras in Islamic history of the region.

ICS Arabia provided full integrated Building Engineering services, including Mechanical, Electrical and Plumbing. We designed and implemented an outstanding lighting system, optimizing the natural light usage to create comfortable and healthy habitat. We used energy efficient solutions saving energy and cost. Our team focused on high quality, durability, and utmost safety, while protecting the architecture and heritage of the structure.



2009

Cigala Warehouse

Cigala Warehouses is designed to accommodate heavy materials' loads, along with the related handling of equipment such as receiving and shipping.

ICS Arabia provided comprehensive integrated MEP services including feasibility, performance specification, design, consultancy, construction inspection, and the camp maintenance and energy management.

Location: Riyadh

Client: Al Naghi

Status: Delivered

2012

Labor Camp

The labor camp in Riyadh was founded in 2011. The camp features varieties of room sizes and bed capacity options to ensure the workforce is housed in a comfortable, friendly, and safe environment.

ICS Arabia covered the full spectrum of MEP services, including feasibility, performance specification, design, consultancy, construction inspection, and the camp maintenance and energy management.



Location: Riyadh

Client: Kidnah Construction Company

Status: Delivered



2016

Data Center, Yasref

Yasref Data Center is one of the most advanced data centers within the Kingdom of Saudi Arabia.

ICS Arabia provided integrated MEP solutions systems for optimal efficiency in management and maintenance of the facility.

Location: Yanbu

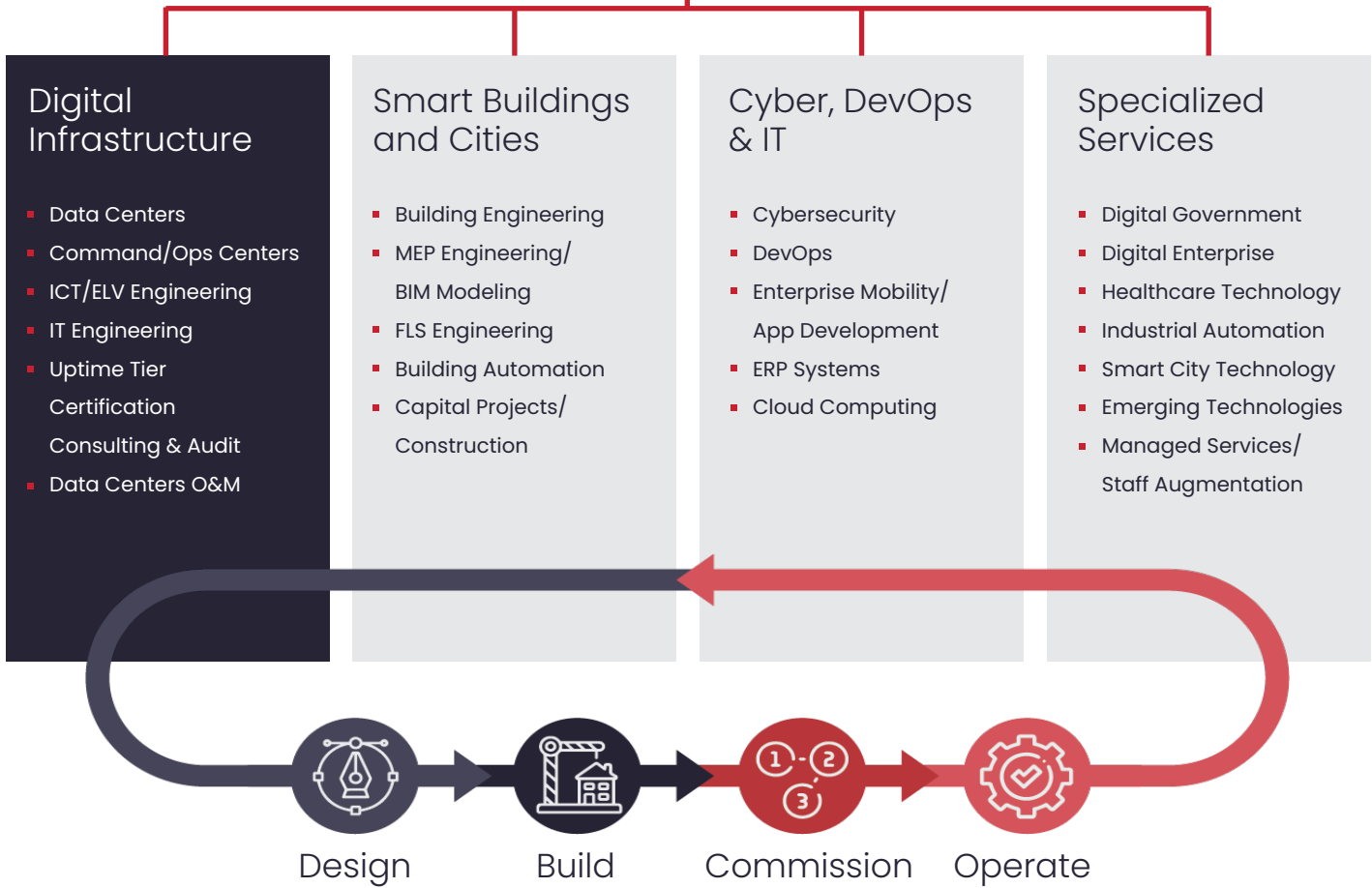
Client: ABV Rock | Owner: Yasref Company

Status: Delivered

ICS Arabia

Integrated Delivery

Certified in-house engineering team, USA reachback and strong partnerships with international and local OEMs, allow us to offer end-to-end delivery



Office # 23, Sultan Business Center,
Prince Sultan Bin Abdulaziz Road,
Riyadh, Kingdom of Saudi Arabia

www.icsarabia.com